

ENJOY YOUR OUTDOOR SPACE IN COMFORT

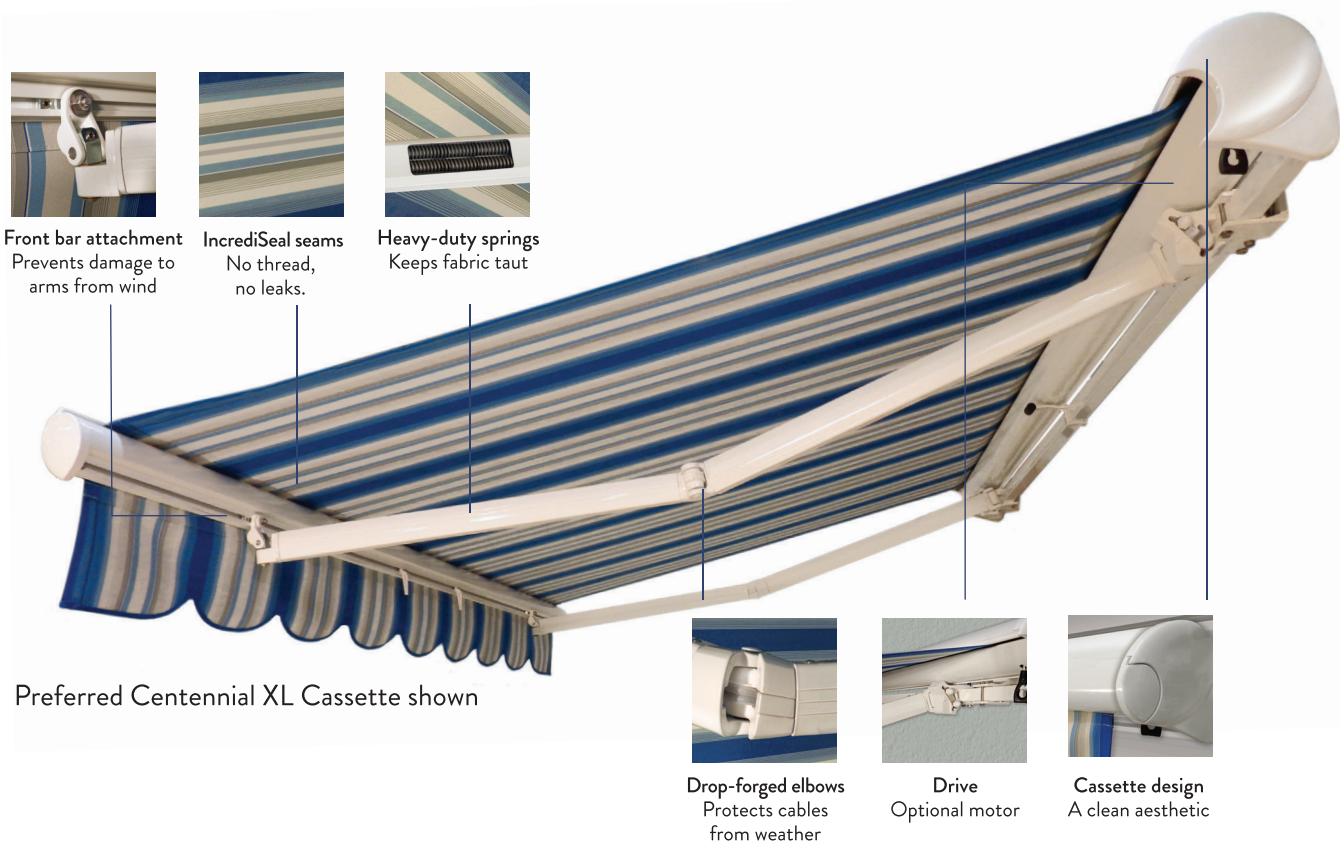


**A. HOFFMAN
AWNING Co.**

SINCE 1920



**Your Trusted Awning Manufacturer for
100 Years & Counting.**



Preferred Centennial XL Cassette shown

Drop-forged elbows
Protects cables
from weather

Drive
Optional motor

Cassette design
A clean aesthetic



Preferred Centennial XL Retractable Awnings

Named in celebration of our 100 year anniversary, our flagship line of Preferred Centennial XL Retractable Awnings offers industry-leading design and technology. We are proud of its quality and durability, and stand behind it with the best warranty in the awning industry.

The Best Warranty in the Business

Compare our warranty to any competitor; nobody else comes close! Our warranty includes:

- Lifetime warranty on IncrediSeal seams, front bar extrusion, cover, structural integrity & more
- 12 year warranty on arms, shoulders, mounting brackets & more
- 12 year warranty on fabric (prorated after 8 years)

IncrediSeal Technology

Innovative IncrediSeal™ seam technology sets our awnings apart. With IncrediSeal, seams are welded instead of sewn, resulting in a clean appearance and zero leaky needle holes. This makes your awning:

- More attractive
- More weather resistant
- Longer lasting
- More durable

Unmatched Fabric Collection

We offer hundreds of fabric options from the best brands around the world. Let us help you find the perfect match for your home!

Sunbrella – #1 selling brand in the US
Recacril – imported from Spain
 (and chosen as our House Brand!)
Sattler – imported from Austria
Dickson – imported from France
Para – imported from Italy



AMERICAN MANUFACTURING EXCELLENCE MAKES A. HOFFMAN AWNING CO
YOUR TRUSTED SOURCE FOR 100 YEARS AND COUNTING.

- Our awnings just last longer.
- We offer a wide variety of shade products, suitable for everything from a small window to the most expansive patio.
- Full service makes purchasing easy; we take measurements, lead you through customization options, and install the completed awning.
- Retractable and custom awnings are made to your exact specifications, color and fabric preferences.



The Modern Architectural Retractable Awning

Featuring a contemporary, wide 6" flat front bar and innovative gutter system.



Contemporary Flat Front Bar
No Valance Required



Traditional Round Front Bar
Valance can be added.

Additional Awning Solutions

from A. Hoffman Awning Co:

5 Choices

to consider for a deck, patio or porch awning:

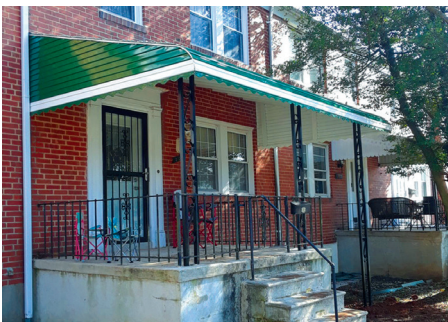
Extend your living space and relax in the shade with a canopy. The frames & fabrics are sturdy for withstanding heavy rains and wind through all seasons.



Retractable Awning



Fabric Awning



Step-Down Aluminum Awning



Flat Pan Awning



Standing Seam Awning

4 Choices

to consider for a stairwell awning:

No more snow shoveling, or removing leaves in tight stairway entrances. No more dangerous ice on your steps and stairways. Our basement solutions can come in metal, vinyl or fabric.



Flat Pan Stairwell Awning



Aluminum Stairwell Awning



Fabric Stairwell Awning



Standing Seam Stairwell Awning

The A. Hoffman Awning Co

5113 Belair Road, Baltimore, MD 21206

Phone: 410-685-5687 | Fax: 410-539-2890 | Toll Free: 877-685-5687

info@ahoffmanawning.com

Get a **FREE** estimate and see our complete range of awnings at www.ahoffmanawning.com



A. HOFFMAN AWNING Co.

SINCE 1920

Quality Awnings, On Time and On Budget.